

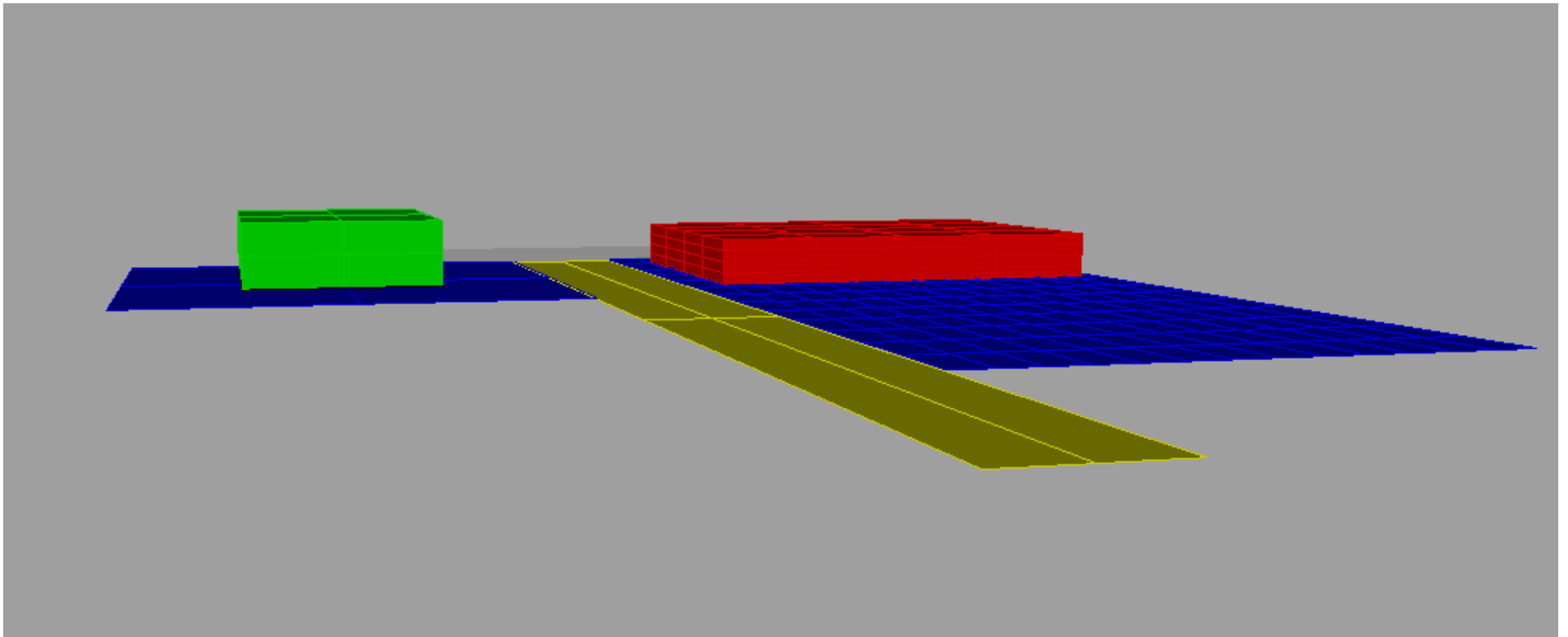
# Agenda

- Overview of Potential Building Height (10 Minutes)
- Small Groups to Discuss Potential Building Height/Amenities (20 Minutes)
- Small Groups Report Back to Large Group (20 Minutes)
- Q&A (10 Minutes)

# Safeway Sizing Study

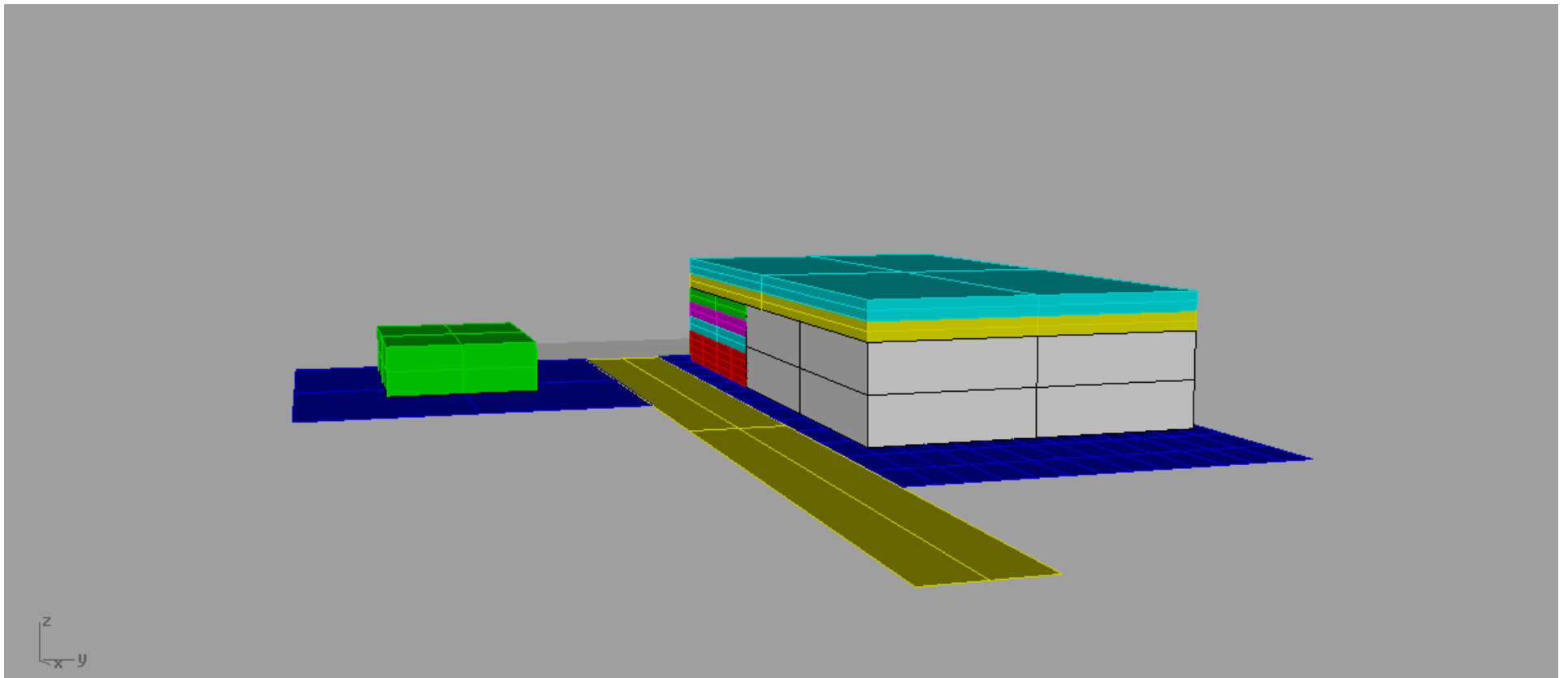
- Heights measured with photographs and 12' reference pole against building
- Horizontal dimensions paced off
- Existing heights
  - Safeway height, 20' , front façade, 24'
  - Lock and Safe, Street side height, 29'

Baseline original  
Safeway, Wilson Blvd and Federal  
Lock and Safe building

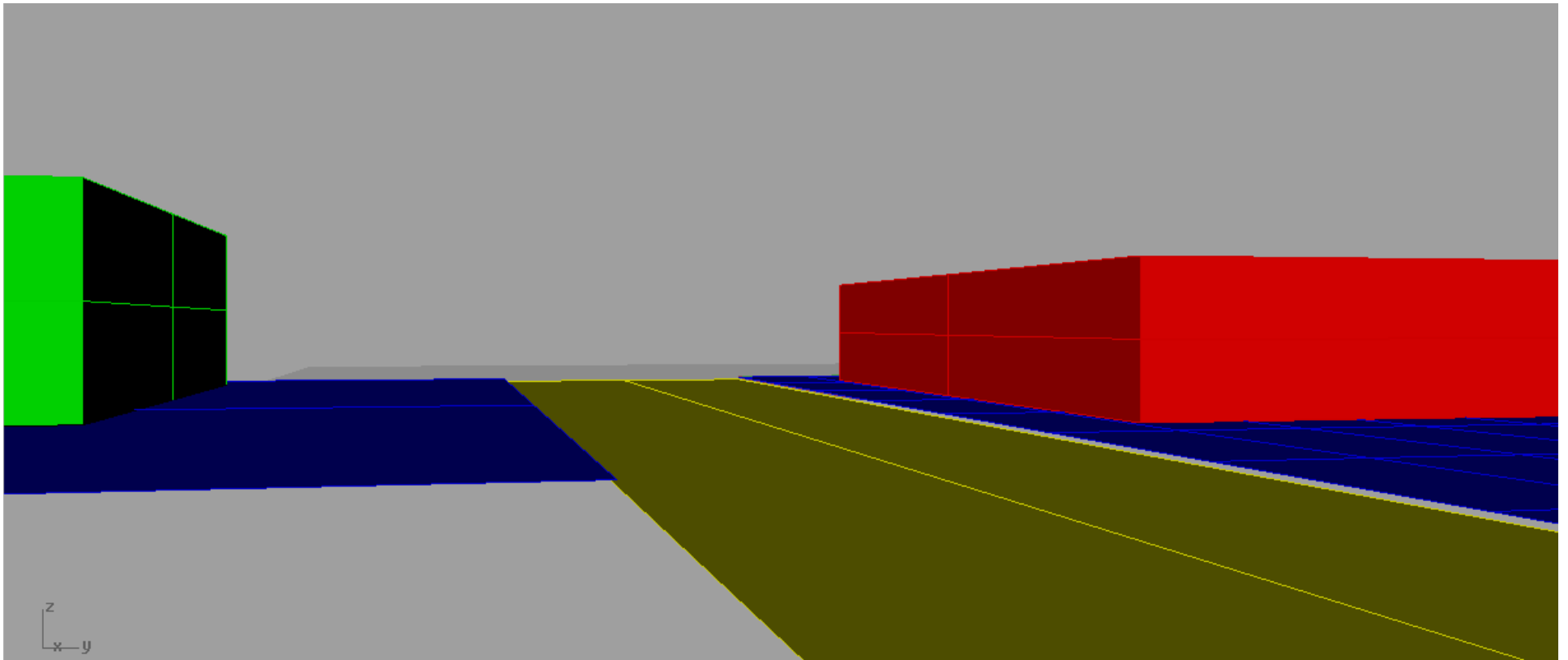


# Highest Suggestion in Safeway RFP

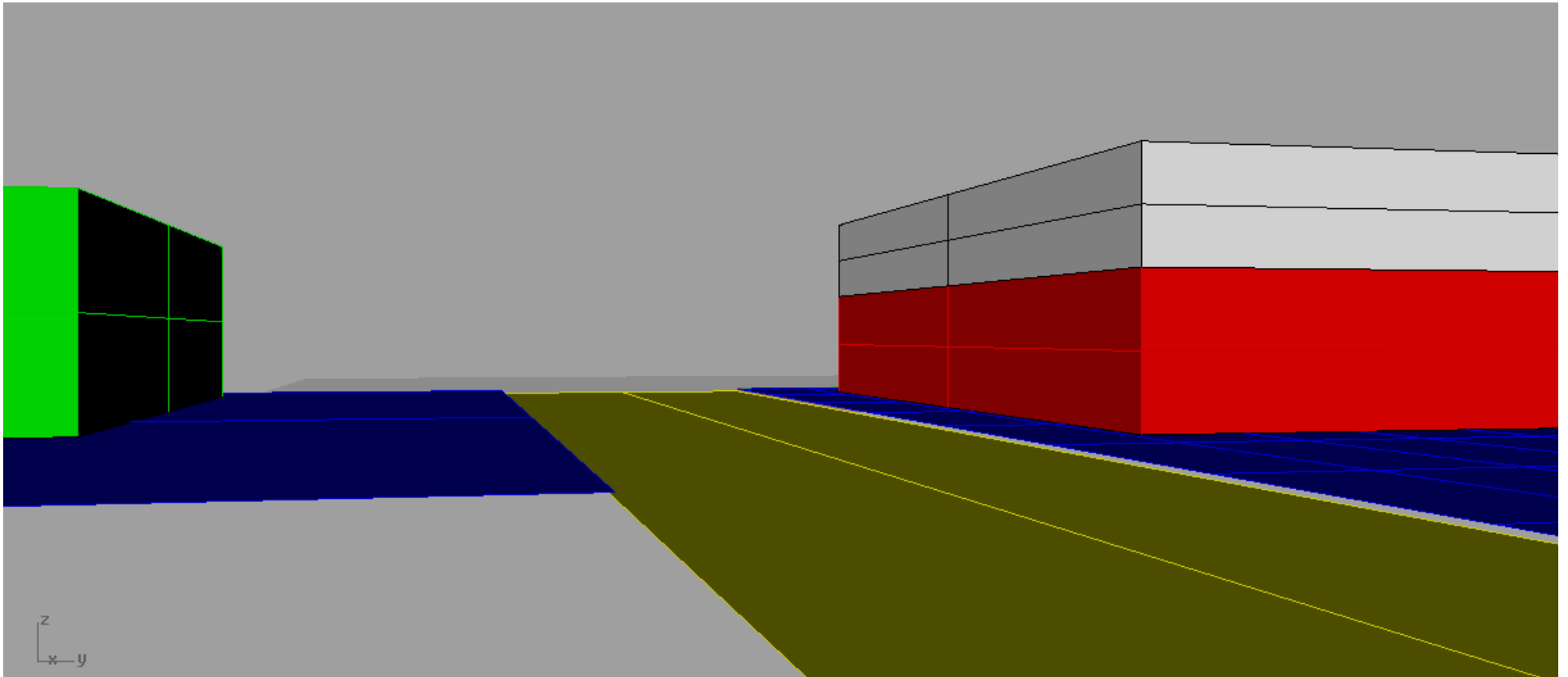
## Safeway plus 5 10' floors



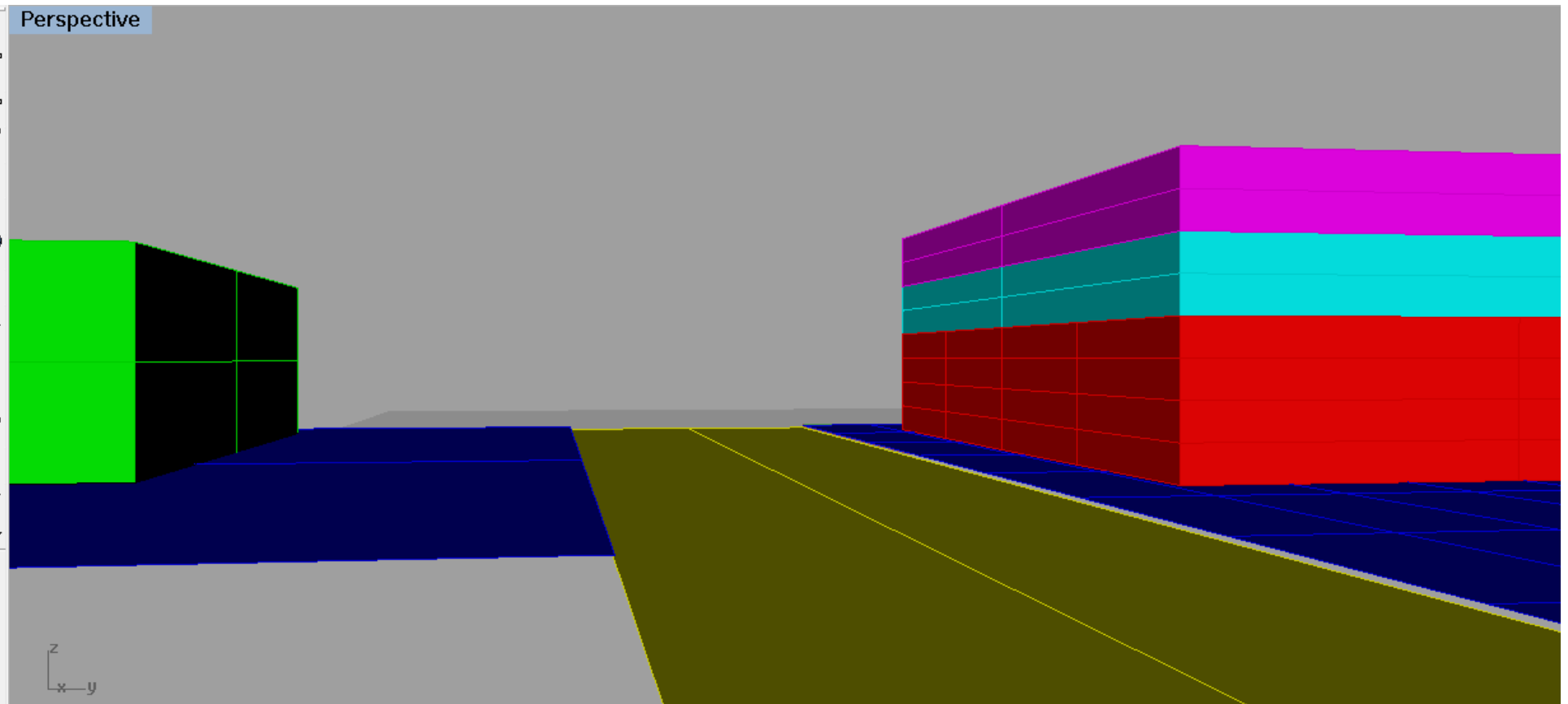
# Existing Safeway at 20' Height



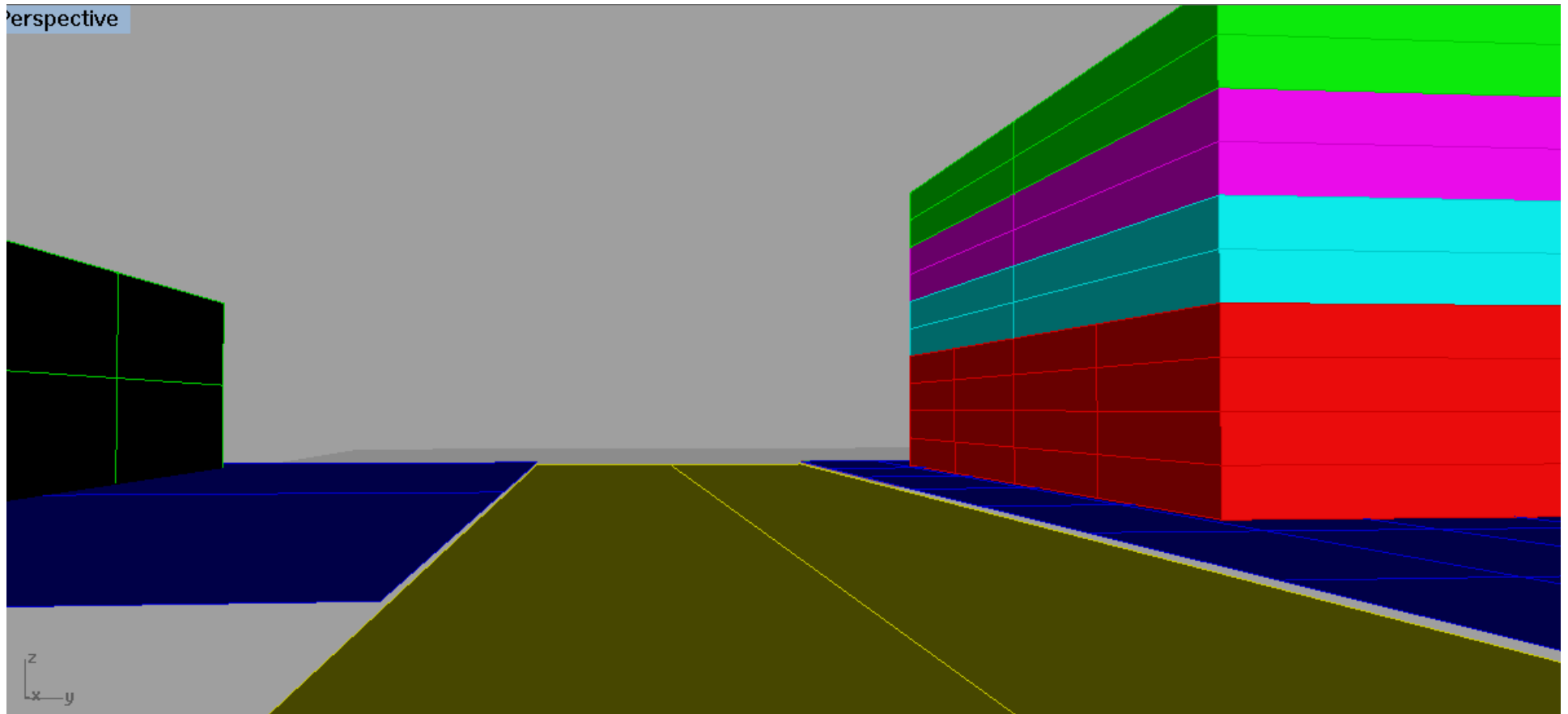
# Existing Safeway Raised to 35' Height



# Two 10' stories added to Safeway footprint

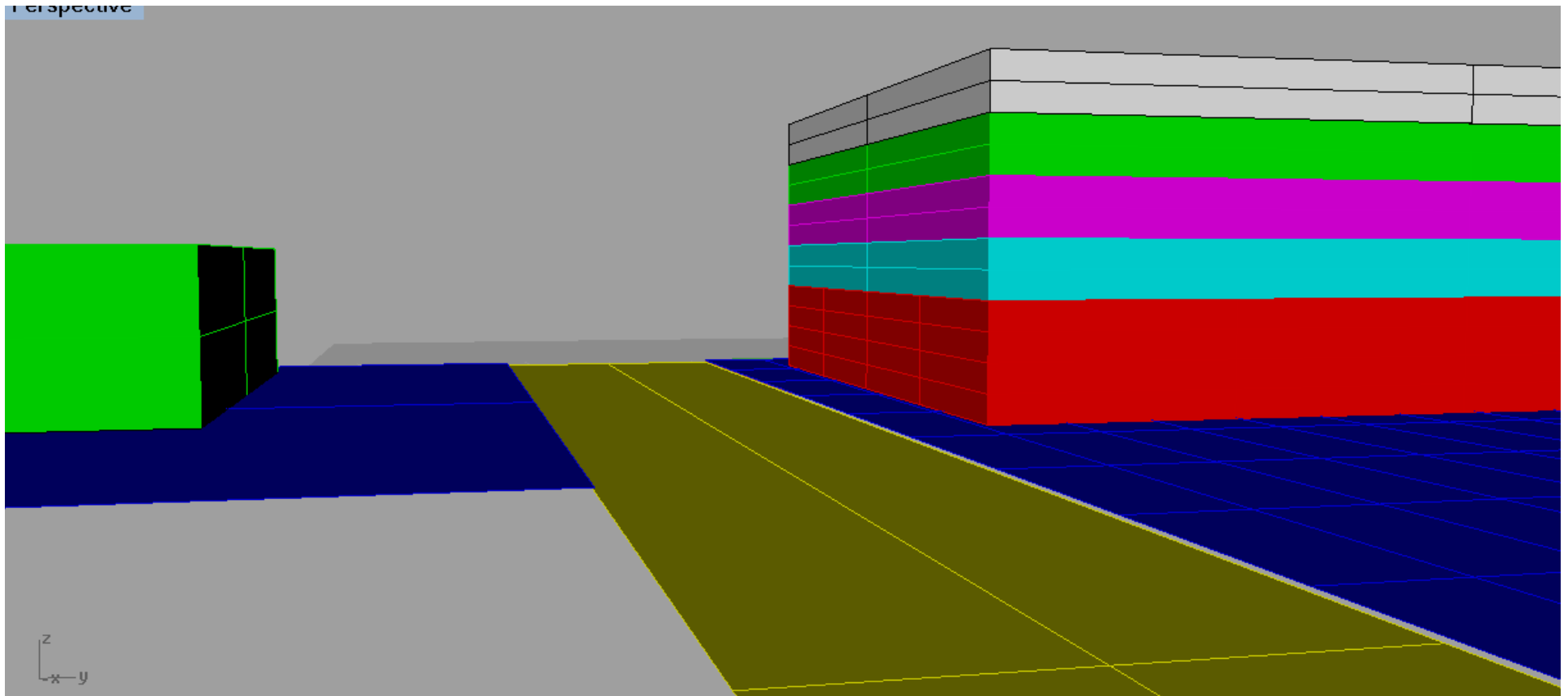


# Three 10' stories added to Safeway footprint

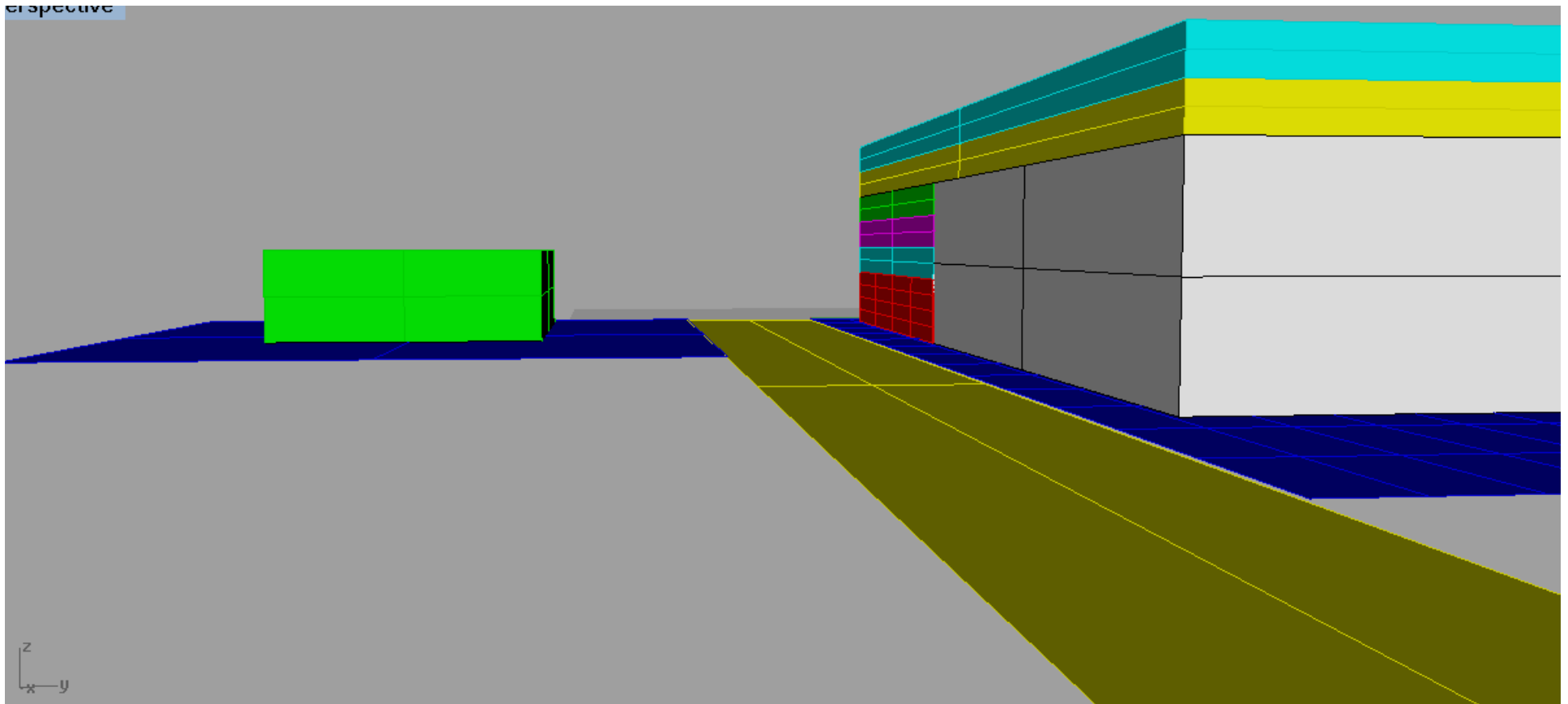




four 10' stories added to Safeway  
footprint



Five stories added and building extended into parking lot



# View from the West

